

# Parents Evening

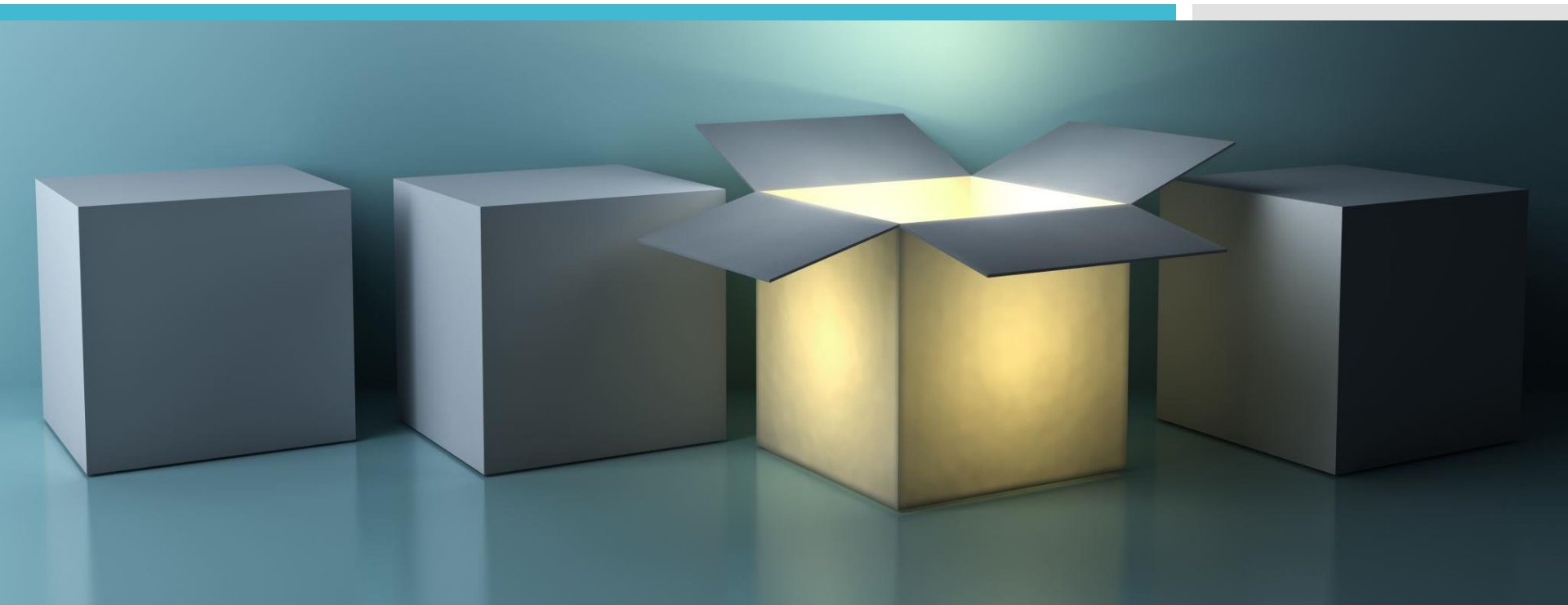
Helping your child  
achieve their best

6<sup>th</sup> year

13th  
September  
2022

- Career Guidance
- Study Skills and Tips
- Other Information
- Questions & Answers

- Ms Lyons – Year Head
- Ms Molloy – Deputy Principal
- Mr. Carr - Principal



# The Guidance Department

Caroline Glynn & Trudy Carroll

## The role of the Guidance Counsellor:

- \* Weekly Careers Class
- \* Individual Guidance

### Educational

(Subject & Level considerations, study skills & motivation)

### Vocational

(Progression routes & entry requirements)

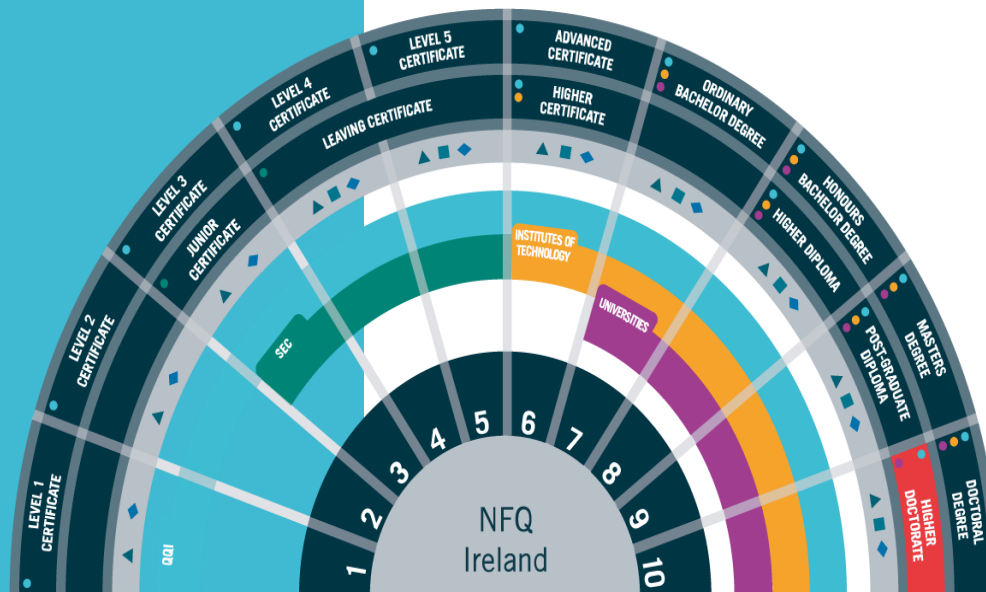
### Personal

(Supporting emotional wellbeing)



# National Qualifications Framework

## Progression Routes



Apprenticeship (level 5+)

PLC (Level 5 & 6)

IT (Level 7 & 8, some 6)

University (Level 7 & 8)

Work

Gap Year

Defence forces

Study abroad (UK, Europe)

# Progression Routes (Practical/ Hands on Options)



## Apprenticeship [www.apprenticeship.ie](http://www.apprenticeship.ie)

Applicant must be employed by an approved employer (SOLAS) – apprenticeship job vacancies.

At least 16 years

Entry requirements/ educational qualifications depend on the programme (apprenticeship directory)

## PLC [www.fetchcourses.ie](http://www.fetchcourses.ie)

- Post Leaving cert course (1-2 years full time) held in community education centre/ schools/ colleges
- Work Experience
- Nationally recognised
- Opportunity to try out a course
- Step towards L.7/L.8 through CAO
- Apply directly to the college

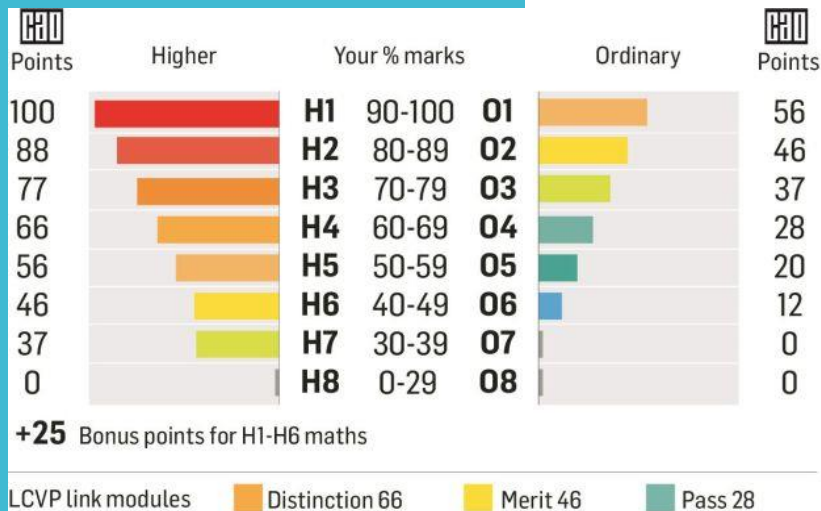
## Apprenticeships & Tipperary ETB



- Tipperary ETB is one of 16 ETB's that support employers and apprentices throughout apprenticeship training.
- 50+ apprenticeship options supported by 300+ employers across the Tipperary region.
- Range from Electrical, Engineering, Motor, Construction, Finance, Hospitality, ICT, and Logistics.
- Tipperary ETB Training Centre is located in Archerstown Business Park, Thurles (Phase - "off-the-job" training)

# (National database for students' college applications

## 3 x Criteria to meet



### Minimum Entry Requirements

- **Uni/IT L8:** 2 x H5 & 4 x H7/O6
- **L7** 5xH7/O6
- **\*NUI's** generally require a 3<sup>rd</sup> lang.
- **\*UL** does not req. 3<sup>rd</sup> lang (course choice\*)
- **\*TCD** eng, mat & lr/3<sup>rd</sup> lang.
- **NB CHECK REQUIREMENTS**

### Subject Specific Requirements

- Primary teaching Irish H4; Journalism & Digital Communications UL Eng H4; Mathematical Science NUIG mat H5/O1

### NB CHECK REQUIREMENTS

### Points Requirement

- Totalling students' best six subjects (\*bonus maths) – specific number of places – students with highest overall points

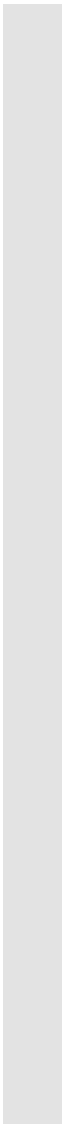
**NB Research is crucial (rash decisions re subjects/ levels can be costly)**



Location	Ireland	UK	Europe
System of Application	CAO <a href="http://www.cao.ie">www.cao.ie</a>	UCAS <a href="http://www.ucas.com">www.ucas.com</a>	Eunicas <a href="http://www.eunicas.ie">www.eunicas.ie</a>
Number of colleges	44	>300	>160
Number of courses	1793	>18,000	>4,200
Deadline Dates	*early application: 5pm 20 <sup>th</sup> Jan. = €30 Normal application date: 5pm 1 <sup>st</sup> Feb. = €45	15 <sup>th</sup> Oct. (restricted Courses) 15 <sup>th</sup> Jan (all other courses)	15 <sup>th</sup> Jan (conditional/limited offers) Jan. + all other offer up to Aug.
Entry Requirements	Points, 5/6 subjects General + specific subject Requirements +	Specific Grades, tariff points, interview	2H4 + 4O6 for majority Specific requirements
Fees	The amount of the contribution varies from one institution to another. The maximum rate of the student contribution for the academic year 2022-2023 is €3,000.	UK (Eng, Scot, Wales) Ranges from location/ university/ college €9,000+ NI €4,500+	Fees vary significantly, depending on country/ university & degree programme (no fees-state-sector universities Denmark, Sweden or Finland BUT cost of living ≥800). Germany & Austria - no Tuition fees but 'semester fees', - €500-600 per year. (Medical Schools in Italy are low (650 – 4000 pa, - linked to family income), fees for Health Sciences in most other countries are high( €9,000 +)

# CAO Information Meeting

- 9<sup>th</sup> November 2022 8pm
- Career Guidance Teachers will be available to give information on completing the CAO application form and other Careers Information



# 6th Year Parents Information Evening

Year Head:  
Ms Eimear Lyons

6th year

14th Sept  
2022



Time  
management



Homework and  
study



Attendance &  
punctuality, cars



Subject projects



Uniform



Phones



Questions &  
Answers

# Setting Subject Targets

- Setting target grades are very important, to help view and monitor progress.
- Log into eportal to track progress on each subject
- In consultation with your teacher write the target grade for each subject into journal – page 29a
- Write class exam result for each subject in journal, track on eportal.
- Reflect on all results – did you reach your target, why/why not, what can you do to ensure you improve your grade, is target realistic, does target need to be reviewed
- Put a study plan in place, **use after school study Mon-Thurs 4pm -6.15 €3**
- Work towards reaching target in each monthly and class assessment
- Study must start NOW! Best of luck!

# Managing time well

## Weekdays:

- Get up on time, eat a good breakfast, arrive to school on time
- Get to class on time
- Eat a good lunch
- In evenings, have a quiet place to study- try to avail of after school study
- Supervised study is a great option and a great routine
  - after school study Mon –Thurs 4pm -6pm €3 pay per session
- Have a study plan, create a definite time to each subject and stick to it.
- Set targets; discuss with subject teacher p29a
- Get organised for the next day before you go to bed
- Get to bed early, no screens- **charge phones in kitchen**
- Take breaks; get fresh air and exercise in preference to sitting in front of TV or screen

## Weekends:

- Use the early finish on Fridays to complete homework
- Use Saturday and Sunday for rest and recreation as well as revision
- Sunday and get prepared for Monday morning
- Part time jobs are not a good idea when trying to manage school study and hobbies

# Mobile Phones

- New mobile phone policy
- Phones are not permitted on the school grounds
- If students are caught using their phones the teacher will take the phone until the end of the school day.
- Refusal to hand up the phone is a major offence
- The second offence will result in detention on Fri 2-3 pm



# Importance of good Attendance & Punctuality

- If a student is absent, late or signing out early, please let the school know by using the school **iclass app**. or alternatively email the Year Head
- If possible, catch up through TEAMS when absent
- Students under 18 must be collected at the school.
- Students over 18; Please encourage your son/daughter to sign the over 18 consent form so that you can continue to provide support and receive updates from the school
- **Cars-** Students are not permitted use their car or to sit in cars during the day.

Subject	% Value in Leaving cert &- details	Approximate start date
Art	50% Project 20% Practical Day Exam	Starts in 6 <sup>th</sup> yr – 10 wks approx May of 6 <sup>th</sup> yr – 5 hr exam
Agricultural science	25% Project	Started in 5 <sup>th</sup> year -
Construction Studies	25% Project and Portfolio 25% practical day exam	Starts in 6 <sup>th</sup> year 4-hour exam in May of 6 <sup>th</sup> year
Computer science	30% Course Work	Preparations began in 5 <sup>th</sup> year
DCG	40% Project	Starts in September of 6 <sup>th</sup> Year – Finishes in January of 6 <sup>th</sup> Year
Engineering	Project; Higher level 25% Ordinary level 30%	6 <sup>th</sup> year
Geography	20 % project	6 <sup>th</sup> year
History	Reasearch study report 20%	October 2021
Home Economics	20% Food Studies Assignment	Started in October of 5 <sup>th</sup> year
PE	Physical Activity Project 20% Performance Assess. 30 %	Start 6 <sup>th</sup> year 6 <sup>th</sup> year
French / German	Oral exam 25%	Preparation begins in 5 <sup>th</sup> year Oral exam in March/April 6 <sup>th</sup> year
Gaeilge	Oral exam 40%	Preparation begins in 5 <sup>th</sup> year Oral exam in March/April 6 <sup>th</sup> year
Music	Performance exam 50 %	March/ April 6 <sup>th</sup> year
More info. In assessment policy on website	<a href="#">link to assessment policy on website</a>	



**Borrisokane PE Jumper**  
BORRISOKANE  
**28,00€**



**Borrisokane PE Quarter Zip**  
BORRISOKANE  
**28,00€**



**Borrisokane PE Skinny Bottoms**  
BORRISOKANE  
**24,00€**



**PE Teeshirt**  
BORRISOKANE  
**20,00€**

## School Uniform

### PE uniform

The PE Uniform is available to order online at the following website:

[www.xgear.ie/collections/borrisokanecommunity-college](http://www.xgear.ie/collections/borrisokanecommunity-college)

If students do not have PE uniform they must wear regular uniform and change into PE gear using dressing rooms and change back after PE class

# Uniform

Blackwatch tartan skirt (Skirt must not be altered in length and worn below the knee)

Navy uniform trousers – For girls the Hunter brand or equivalent uniform trousers. For boys plain navy school uniform trousers. Fashion navy trousers will not be acceptable. (Further details available by checking the sample at the school).

Bottle green v-neck jumper with college crest. White shirt (2).

Navy School Jacket with Crest.

Footwear: Black, Brown, Navy Shoes. Black, Brown, Navy and Navy/Green Decks. The only runners that can form part of the school uniform are complete black runners. Canvas, Uggs, Vans or similar footwear are not allowed.



# School Jacket

Any of the navy school jacket with the school crest is permitted in school.

New ones are available online [Xgear](#)



***Borrisokane Hybrid Jacket***

BORRISOKANE

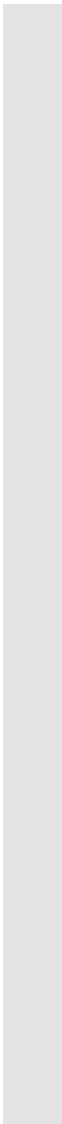
**38,00€**



***Borrisokane Puffer Jacket***

BORRISOKANE

**36,00€**



# Eportal

- School System to record student information
  - Timetable
  - Attendance
  - Calendar of School Activities/Events
  - Positive Comments
  - Behaviour Record
  - Examination Results

Monthly assessments on Eportal. Teacher and student set target and compare achievement to target each month.

- Log on details sent to parents - username and password. If log in details lost contact school and we can email them to you.
- Log on from school website – [www.borrisokanecc.ie](http://www.borrisokanecc.ie)
  - Link to Eportal at top of Home Page.

# Assessments

- Assessment Policy on School website.
- Monthly Assessment – on EPortal. Result and Grade
  - September
  - October - Examinations
  - December
  - February - Mock Exams
  - March/April
- Targets set at beginning of year and can be adjusted as year moves on.



# Assessments

- Reporting on EPortal

## Monthly Assessments – Grade/Mark on EPortal

- October Exams – Results and Formative Comment on EPortal
- Mock Exams - Results and Formative Comment on EPortal
- Report uploaded to EPortal.

**Target Analysis** More

■ Above Target      ■ On Target      ■ Below Target

Subject	Exam	Sept	Oct	Nov	Dec	Jan	Feb	Mar	Apr	May	Target-JC	Target-LC
Biology	Annual										H2	

**Results** More

1 examination marked in this dataset.

Examination
Annual

Click more to see all results in all datasets.

Click More

View Exams:  Compare Exams:  Compare Criteria:

Exams	Datasets	Subjects
-	2021/2022	-



Select PDF size: A4

Right click the link above and choose "Save As..." to save the file to your computer, or click the link if you have a suitable Acrobat PDF Reader plugin.

View Full Table Data

**Annual**

Exam data and details

Dataset	Subject	Teacher	TargetGrad
2021/2022	Biology	Walsh, Laura	H2

Select Year from Datasets dropdown menu

# EPortal – Reports



## Reports



More

### Report Details

Name	Last Modified
<a href="#">Borrisokane Portrait Report - TY - Christmas 2020</a>	15-01-2021 14:11
<a href="#">Borrisokane CC TY Summer 2021</a>	10-06-2021 11:16
<a href="#">5th year November Report 2021</a>	21-12-2021 08:15
<a href="#">Borrisokane CC Report 5th year - Summer 2022</a>	15-06-2022 17:28

# Data Protection

- Eportal – Personal Data.
- Reports to Student – over 18 parents have no access to Eportal unless with students permission.
- Forms for permission on school website – [Click Here.](#)

# School App

iClass App

Verification Code

RT@7T4

News

Events

Send Notes to School  
– Absence/Lates/  
Leave early

The graphic features the iClasscms logo at the top, with a graduation cap icon above the 'i'. Below the logo is a semi-transparent box containing the text 'MOBILE APP INSTRUCTIONS FOR DOWNLOAD'. The background is a blue-tinted image of a school building. A central smartphone displays the app's search interface. Below the phone are seven numbered steps (01-07) with corresponding icons and descriptions. At the bottom, three smaller smartphones show different app screens: a registration form (05), a student profile (06), and a news feed (07).

## iClasscms

**MOBILE APP**  
INSTRUCTIONS FOR DOWNLOAD

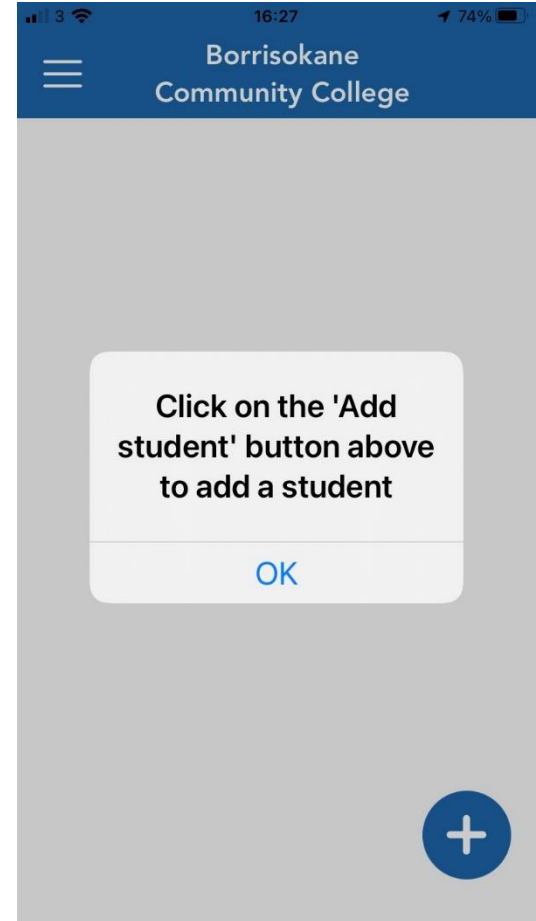
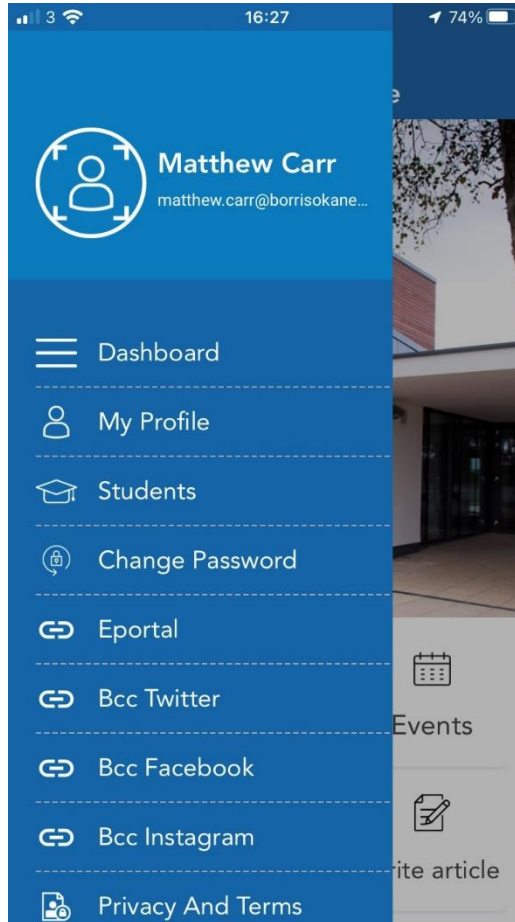
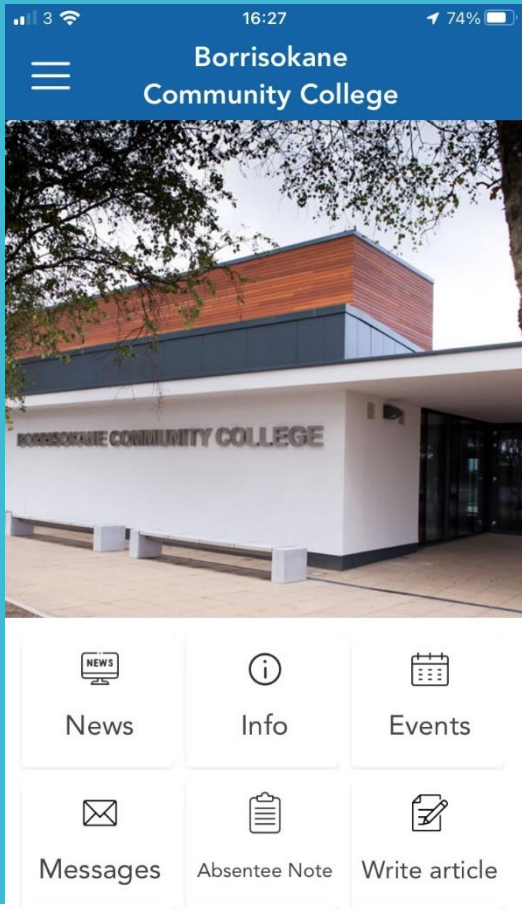
Select School

SEARCH

iClass Boys Community College  
Hill Street Crossroads, Newtown  
67320

- 01** Go to **App Store** and Search for **"iClasscms"**
- 02** Install the App
- 03** Select School  
(It will prompt your nearest school, if not simply type school name into search box)
- 04** Click **"Register"**
- 05** Add Details
- 06** Add Student
- 07** **DONE!**  
Stay up to date with latest news, events and school messages

# Add a Student



# Coronavirus **COVID-19**



Coronavirus  
**COVID-19**  
Public Health  
Advice

**Stay safe.  
Protect each other.**

**Know the symptoms. If you have them, self-isolate and contact a GP.**

**Continue to:**



### **Wash**

your hands well and often to avoid contamination.



### **Cover**

your mouth and nose with a tissue or sleeve when coughing or sneezing and discard used tissue safely.



### **Limit**

contact with others when out and about.



### **Distance**

yourself at least 2 metres (6 feet) away from other people, especially those who might be unwell.

### **Symptoms of COVID-19**

- > a fever (high temperature – 38 degrees Celsius or above)
- > a cough – this can be any kind of cough, not just dry
- > shortness of breath or breathing difficulties

### **#holdfirm**

Visit [HSE.ie](https://www.hse.ie) for updated factual information and advice

## Absence due to illness

- If student ill then do not send student to school
- If students out of school follow class work/homework on TEAMS or use a homework buddy.
- Follow a structure using timetable- if working from home.
- Any queries email subject teachers.



## Parent Teacher Meetings

- If you need to speak to an individual teacher please contact the teacher or school office – 067 27268 or email [info@borrisokanecce.ie](mailto:info@borrisokanecce.ie) or email the teacher.
- **Parent/Student/Teacher Meeting  
6th Year - Thursday December 1<sup>st</sup>  
4.15 pm to 6.45pm**
- Contact Year Head, Principal and Deputy Principal.

# Parents Committee

- Huge support to the school over the years
- Encourage parents to join the committee
- Voice of parents in the school
- Parents Association AGM on Monday October 3<sup>rd</sup> at 7.30pm. Talk from Stella O'Malley Psychotherapist on How to Support your Child through the Teenage Years
- €50 Parents Association Family Levy

# Final Word what can you do to help?

- Allow/ Encourage the dream
- Facilitate  
Schoolwork/Homework/Research/Independence
- Inform yourself
- Support and Encourage
- Praise
- Encourage short study breaks to improve concentration
- Leaving Cert is similar to a marathon very important that the student is at their peak in June 2023.
- Ultimately decisions are student's own, allow them to take responsibility.
- Help your child set short term goals and build on them.
- Follow progress on Eportal.

- Slides available on school website in next few days.
- School Website, App and Social Media will keep you up to date on Borrisokane Community College activities.
- Questions?